

FM Map Viewer

Mapping functionality with your own maps

Dear Siemens VDO Trading Partner,

The new FM Map Viewer extension has been released and is available on the FM Professional V8 CD-ROM.

With the new FM Map Viewer you can incorporate your own regional or Third-Party maps with the Fleet Manager Professional application requiring minimal or no involvement of software developers. This promotes a short-time-to-market solution for customers with customised map needs.

What's new in FM Map Viewer

The FM Map Viewer can display vehicles, locations and active events on your customised digital maps, as well as on geo-referenced image files.

Functionality includes

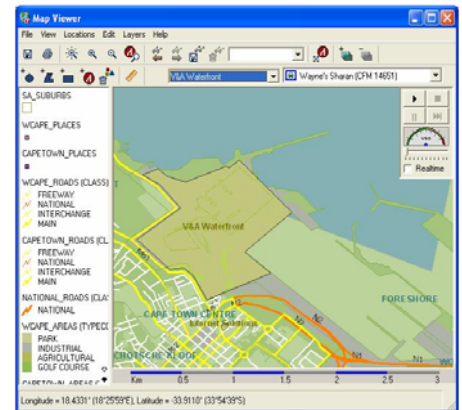
- Loading of individual layers
- Plotting GPS logs from Activity Timeline
- Trip replay (in real-time)
- Drawing or importing locations
- Drawing and saving new street sections
- Finding Street Addresses
- Zooming to vehicle or location
- Measuring distances
- Customizing look of maps
- Printing maps

Supported Map Data Types

ESRI Shape (*.shp)	This is one of the industry standards for storing geographic data. Shape files are required to be in geographic coordinates WGS84 format (decimal degrees).
CAD (*.dwg, *.dxf)	Digital exchange Format and AutoCAD Drawing Database. These are industry standards for CAD files and allow any CAD file saved in geographic units to be loaded into the FM Map Viewer.
VPF (*.pft, *.lat, *.aft, *.tft)	Vector Product Format. This is the U.S. Department of Defense military standard for large geographic databases.
Standard Images (raster files)	The following raster files are supported and will display inside the FM Map Viewer, provided it has geo-referencing information. *.bmp, *.dib, *.tif, *.tff, *.tiff, *.jpeg, *.jpg, *.bil, *.bip, *.bsq, *.gis, *.lan, *.rlc, *.sid, *.sun, *.rs, *.ras, *.svf, *.img, *.ovr, *.l, *.ntf

The FM Map Viewer needs to be licensed separately. It can be ordered with the order number: **X88-723-001-011**. You will receive a package number to be entered on your FM Extension Registration Card (to be found on www.vdofm.com - Services → Downloads → FM Extensions → Documents section). An unlocking code will be returned to you by e-mail or by fax.

With kind regards:
Siemens VDO Automotive
Service & Special Solutions - MSU Fleet



FM Map Viewer

- Use of own regional maps
- Load individual layers
- Display vehicles and locations
- Trip replay
- Add street sections
- Find Street Addresses