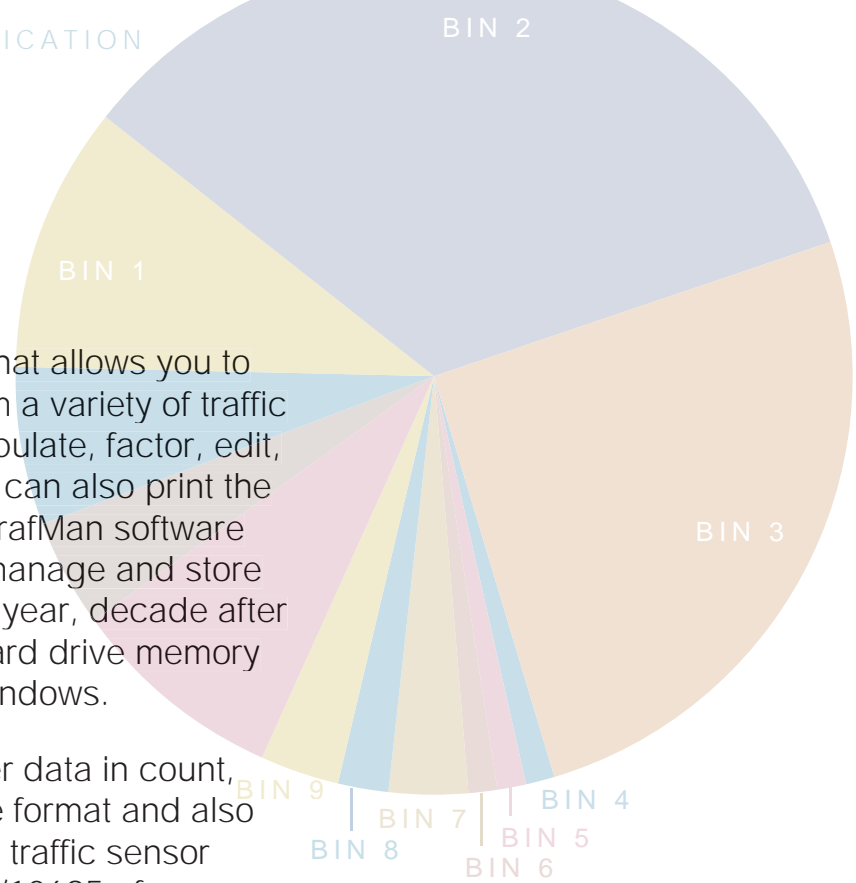




Traffic data software

CLASSIFICATION

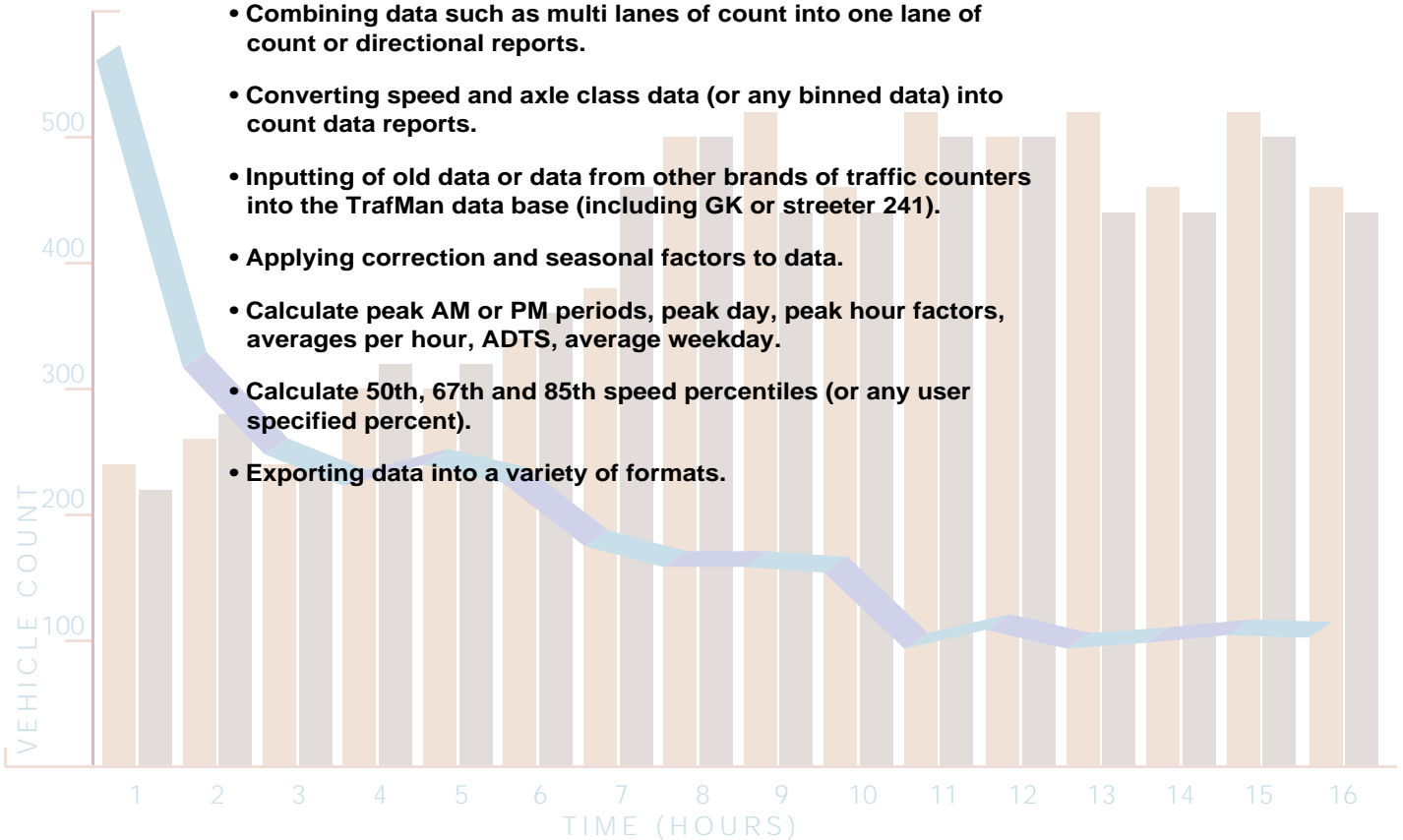


Trafman is data-based PC software that allows you to program, recover and process files from a variety of traffic counters. TrafMan enables you to manipulate, factor, edit, combine and convert any data file. You can also print the file in a wide variety of report formats. TrafMan software was specifically designed to help you manage and store data from thousands of sites, year after year, decade after decade, without using up volumes of hard drive memory space. TrafMan also runs well under Windows.

TrafMan software will process counter data in count, speed and axle bins, vehicle-by-vehicle format and also sensor pulse data. Sensor pulse data is traffic sensor actuation stored with a time stamp (to 1/10695 of a second) in the counter memory. The TrafMan software accepts this sensor pulse data and can use it to create the traffic data reports you dictate.

**Standard Features**

- Editing of all areas of data including header information.
- Converting of data from one format to another format.
- Combining data such as multi lanes of count into one lane of count or directional reports.
- Converting speed and axle class data (or any binned data) into count data reports.
- Inputting of old data or data from other brands of traffic counters into the TrafMan data base (including GK or streeter 241).
- Applying correction and seasonal factors to data.
- Calculate peak AM or PM periods, peak day, peak hour factors, averages per hour, ADTS, average weekday.
- Calculate 50th, 67th and 85th speed percentiles (or any user specified percent).
- Exporting data into a variety of formats.



## User-friendly

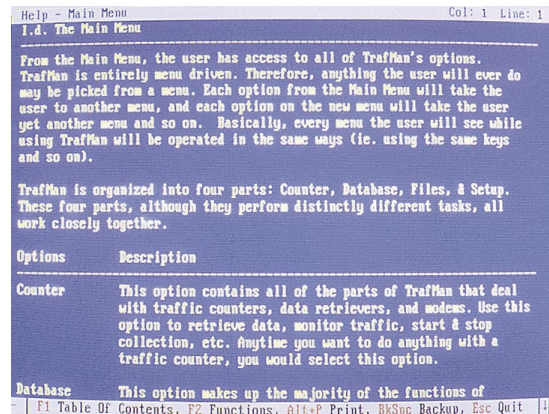
TrafMan has many features that make it user-friendly:

- It uses a combination of menu and question/answer formats to guide you through the options.
- You won't need to know what serial port is being used—TrafMan will automatically check all ports, find the traffic counter or modem, connect, and, if possible, inform you what is on the other ports.
- TrafMan will automatically match the baud rate of the counter.

## Online Help

TrafMan has an extensive on-line manual which is context sensitive— you'll get specific information about the particular section you are working in. So the answer to your question is just a single keystroke away.

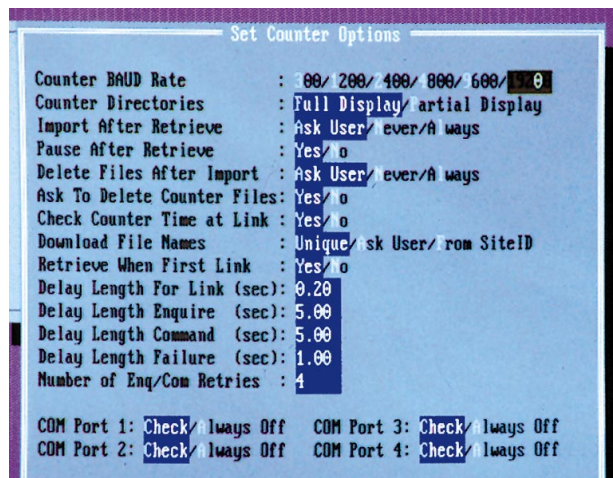
In addition, a table of contents provides quick access to any program information.

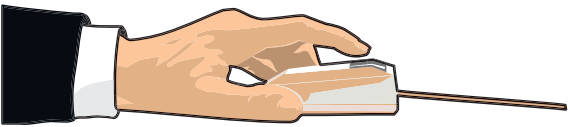


## Customization

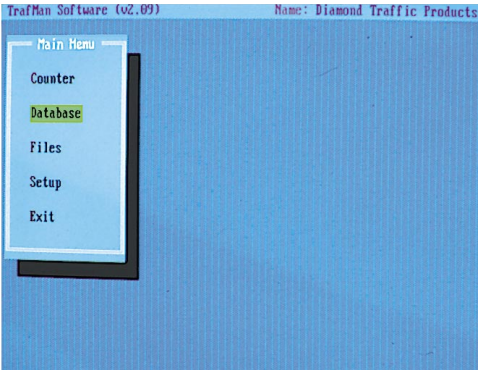
TrafMan allows you to customize the program to suit your work habits. This is one of the screens where choices can be made.

For example, the sixth item on this screen refers to deleting files in the counter after retrieving the file. You can direct TrafMan to ask you if you wish to delete the counter file, or just automatically delete it. There are 65 areas where you can customize TrafMan to suit your needs.



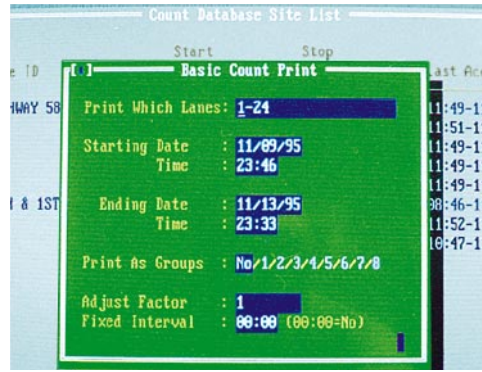


**TrafMan** is easy to use. This example shows the actual steps used to print a file.



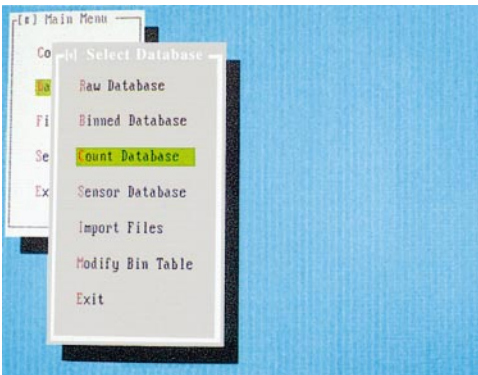
**1**

This is the main menu. To select a data file to print, you highlight "database" using the arrow keys and press <ENTER>. (To program and retrieve files from a counter, you would select "counter".)



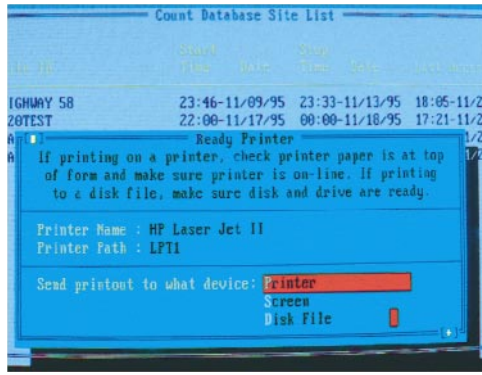
**5**

TrafMan allows you to print the entire file or only portions of it. You can combine multiple lanes of count into one or two lanes of count, as well as apply a seasonal factor to the data.



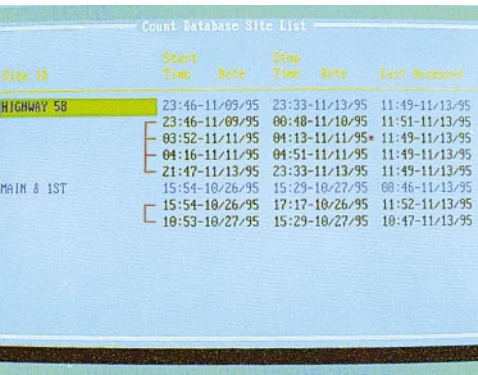
**2**

After selecting "database", this menu will appear to help you find the data you want to print.



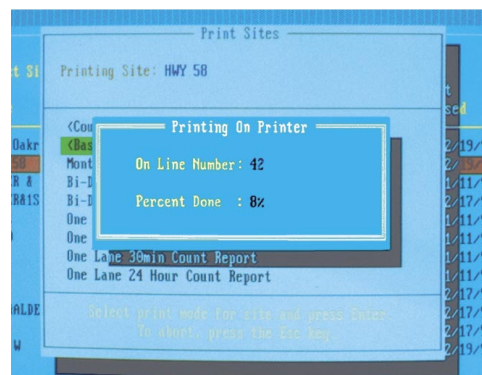
**6**

This screen asks you where you want the data to go: the printer, monitor screen or disk file. Select "Printer" to begin the printing.



**3**

A list appears of all your "count only" files, showing Site I.D. and Start and Stop Dates. Select the file you want and press P to print.



**7**

While the file is being printed, this screen keeps you posted on its percentage of progress.



**4**

Select the report format you want.



Voilà!  
Your report is ready.

**Distributed by:** International Road Dynamics Inc.  
702 - 43rd Street East, Saskatoon, SK S7K 3T9  
Ph: (306) 653-6600 Fx: (306) 242-5599  
email: info@irdinc.com  
www.irdinc.com